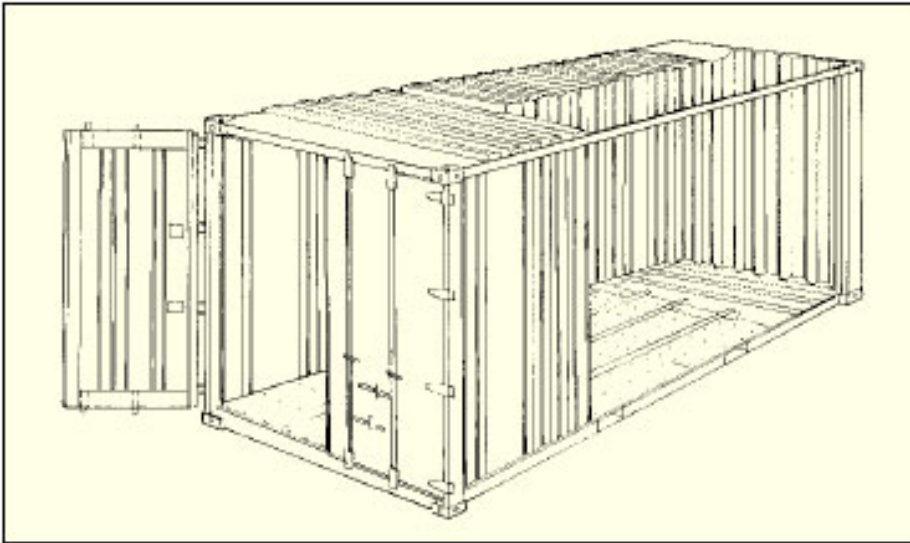


20' Dry Frieght Containers



Height	Material	Tare Weight (kg/lbs)	Max* Cargo Cap. (kg/lbs)	Door Opening		Interior Dimensions			Interior Cube (m³/cft)
				Width (mm/ft)	Height (mm/ft)	Length (mm/ft)	Width (mm/ft)	Height (mm/ft)	
8' - 6"	Steel	2,300 5,071	21,700 47,840	2,340 7' 8"	2,280 7' 6"	5,905 19' 4"	2,350 7' 9"	2,392 7' 10"	33.2 1,172
8' - 6"	Steel	2,300 5,071	27,700** 61,070**	2,340 7' 8"	2,280 7' 6"	5,905 19' 4"	2,350 7' 9"	2,392 7' 10"	33.2 1,172

Remarks * : Subject to road and rail weight limitations.

** : Figures were changed from containers produced after July 1998.

: Above are typical figures for this type of containers.